



# Policy for Collective Worship 2024 -2027

Reviewed by LGB, Autumn Term

## Our Vision

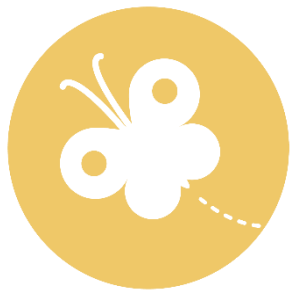
As a community, we are working together to ensure educational excellence underpinned by our Christian ethos and values, enabling all to live a rich and abundant life and to achieve their full potential. Each individual should leave us fully prepared for the next stage of their life. (Reflecting John 10:10)

**Jesus said, 'I have come to give life – life in all its fullness.'**

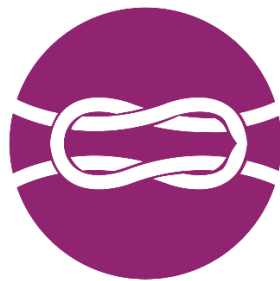
## Our Values

Snarestone C of E Primary School encourages and promotes Christian Values.

Our pupils, governors, staff, parents and community members chose our five key values:



HOPE



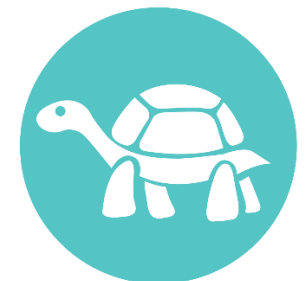
TRUST



WISDOM



FRIENDSHIP



ENDURANCE

## **Introduction**

The vision of the school, encompassing all that we stand for, is reflected in and expressed through Collective Worship at Snarestone Primary School; it derives from the Christian tradition and seeks to activate our beliefs and values. Collective Worship, within a Christian context, plays an important part in the life of our school. It is a spiritual time in the school day when children meet together with members of staff, in a calm and peaceful atmosphere and where all present are given the opportunity to reflect and participate. Collective Worship at Snarestone is “welcoming, inclusive and exemplifies the principles of Christian hospitality”.

## **Legal requirements**

- Collective Worship is in accordance with the Trust Deed of the school, which requires worship to be consistent with the principles and practices of the Church of England and will, therefore, be wholly or mainly of a broadly Christian in character.
- The 1988 Education Reform Act states that Collective Worship should be part of a broad and balanced curriculum which promotes the spiritual, moral, cultural, mental and physical development of pupils and society.
- All maintained schools – including church schools – must provide a daily act of Collective Worship for all registered pupils.
- Parents have the right to withdraw pupils from collective worship.

## **School aims**

- Collective worship is inclusive, invitational and inspiring at Snarestone Primary School.
- Collective worship encourages pupils to consider fundamental questions about the purpose of being and about moral and ethical stances.
- Collective worship brings children together, enabling them to experience the security of belonging to a community.
- Collective worship affirms the Christian faith and the Christian status of Jesus as Son of God.

## **Objectives**

- Explore the school’s vision and how that underpins our shared values and virtues.
- Introduce pupils to the practice of religious worship through music, art, story, poetry, movement and prayer.
- Create a warm, caring and respectful atmosphere conducive to worship; including the manner of entry and exit.
- Help pupils experience a sense of awe, wonder, reverence and inner stillness.
- Raise pupil’s curiosity about the ultimate mysteries of life.
- Enable pupils to learn about and consider in depth Christian teaching, Christian festivals and biblical material.

- Help pupils appreciate that we are ‘stewards’ of God’s world.
- Enable pupils to reflect upon their own beliefs in relation to those of others.
- Enhance pupils’ spiritual, moral, social and cultural development.
- Guide children towards the spiritual and religious options open to them.
- Help children distinguish between right and wrong.
- Affirm pupils’ personal worth and responsibility.
- Celebrate individual and collective achievements.
- Develop a sense of community within the school.
- Celebrate religious festivals and special occasions with specified worship.

### **Management of Collective Worship**

The Governing Body is responsible for:

- Ensuring that the Foundation of the school is honoured and that the worship policy is firmly based upon the intentions set down in the Trust Deed.
- Ensuring that the Collective Worship Policy is put into practice and monitored by the appropriate Governor.
- Engaging an appropriate inspector to carry out the Section 48 Inspection of a church school alongside the OFSTED Inspection.

The Headteacher has responsibility for managing the worship on a day to day basis ensuring that all legal requirements are complied with. Collective Worship will be reviewed within the cycle of School Improvement Planning. This review will cover the following aspects of collective worship: themes and approaches, the development of resources, staff training and support, pupil participation and response

### **Organisation**

Daily acts of Collective Worship take place mostly in the school hall as follows:

<b>Day</b>	<b>Monday</b>	<b>Tuesday</b>	<b>Wednesday</b>	<b>Thursday</b>	<b>Friday</b>
<b>Focus</b>	Picture News Worship (classrooms)	Christian Reflection	Christian Reflection	Picture Book Worship	Christian Reflection & Celebration
<b>Led by</b>	Class Teachers	Headteacher/SLT	Headteacher/SLT	Headteacher/Teacher	Headteacher/SLT

Pupils from each class take a turn at being Prayer Leaders for the week ahead. They decide what items to put on the worship table, lead prayers and feedback to SLT about the Collective Worship for that week.

The school worships in church at Harvest, Christmas, Easter and at the end of the year.

Parents are invited to join us in these celebrations; they are also invited to a weekly celebration assembly and to events when children are taking part.

Visitors and outside speakers are also invited to lead our worship.

For Remembrance, worship takes place either at the Snarestone War Memorial or at the National Arboretum in Alrewas.

### **Records and Assessment**

- Themes for Collective Worship can be found on the Worship plan which is shared on the school sharepoint and on the website.
- Related resources and ideas are held in the Headteacher's room, on the school server and with the RE resources.

### **Monitoring**

Monitoring of Collective Worship is carried out jointly by the Headteacher, LGB and RISE:

- Checking that practice matches aims and objectives.
- Classroom feedback from pupils, both written and verbal.
- Comments from parents, visitors and governors.
- The extent of the influence upon pupils' attitude and behaviour throughout the school day,

The Prayer Leaders also reflect on Collective Worship and feed their thoughts back to the senior leadership team regularly. Staff meetings are used for discussion and the update of information as and when necessary.

### **Equal Opportunities**

All pupils have equal opportunity to take part in Collective Worship and to benefit from the experience. The school prospectus informs parents of their right to withdraw pupils from Collective Worship. Such pupils are fully supervised in another part of the school.

## **Multiculturalism**

Collective worship celebrates the global and multicultural nature of Christian worship. A variety of multicultural material is available throughout the school. Stories are shared and festivals celebrated in accordance with the major faiths represented within the world. Tolerance and understanding of other religions is encouraged through the teaching of RE, weekly picture book worship and special assemblies.

## **Review**

The Governing Body will review this policy, formally, 3 years from the date of its adoption. Informal Review may be necessary in the interim and should take place as and when required.

## **Sources**

<https://www.churchofengland.org/sites/default/files/2021-05/Collective%20Worship%20Guidance%2018052021.pdf>